

[www.nexcom.com](http://www.nexcom.com)



Ultra Compact Embedded System

# NICE 3150 Series

## Installation Guide



## Handling Precautions

1. Always disconnect the unit from the power outlet whenever you are installing or fixing a component inside the chassis.
2. If possible, always wear a grounded wrist strap when you are installing or fixing a component inside the chassis. Alternatively, discharge any static electricity by touching the bare metal chassis of the unit case, or the bare metal body of any other grounded appliance.
3. Hold electronic circuit boards (such as the EBC575 board) by the edges only. Do not touch the components on the board unless it is necessary to do so. Do not flex or stress the circuit board.
4. Use the correct screws and do not overly tighten them.
5. Keep the original packaging and static-protective bag in case the unit has to be returned.

## Packing List

### Assemblages

- \* EBC573-FL embedded CPU board x 1
- \* NICE3150 Chassis set x 1
- \* IDE Cable x 1
- \* CD-RW+DVD Combo x 1
- \* SILMCDROMDB board x 1
- \* Print Cable x 1
- \* COM Port Cable x 1

### Accessories

- \* Quick reference guide x 1
- \* PS2 keyboard/mouse cable x 1
- \* CD driver x 1
- \* 120W Power Adapter x 1

## Specifications

### **Construction:**

- \* Aluminum Chassis with FANless Design

### **Dimensions:**

- \* 195mm (W) x 268mm (D) x 80mm (H)

### **Mainboard:**

- \* EBC573FL
- \* Support Intel Pentium M or Celeron M
- \* Chipset : Intel 852 GM(E) chipsets

**Device:**

- \* Two 184-pin DDR DIMM Support Max up to 2GB
- \* On board Compact Flash socket x 1
- \* Internal 2.5"HDD Drive bay x 1

**Slim DVD Combo:**

- \*CD-RW+DVD Combo 24W/10E/24R + 8D

**Front I/O Ports:**

- \* Optional customized logo
- \* HDD access/Power/LAN status LED
- \* USB 2.0 x 2 ports

**Rear I/O Ports:**

- \* PS/2 keyboard/mouse x 1
- \* USB 2.0 x 4 ports
- \* Serial port x 4
- \* Audio Mic-in x1 and Speaker out x1
- \* Dual pixel LVDS interface x 1
- \* 10/100 Ethernet LAN x 2
- \* VGA connector x 1
- \* S-Video TV-out x 1
- \* DC power input x 1
- \* Power On/Off switch x 1
- \* Parallel Port x 1

**Power Source:**

- \* DC to DC power design on board support 12VDC ~ 30V DC (Max. 120W)
- \* External 120W AC adapter x 1.
- \* Power input: 100~240V AC 2A 50/60Hz
- \* Power output: 24V DC

**Environments:**

- \* Operating temperature on Tcase: 5°C ~ 45°C with HDD or -10°C ~ 50°C with CF
- \* Storage temperatures: -20°C to 80°C
- \* Relative humidity: 10% to 90% (Non-condensing)

**Certification:**

- \* CE/FCC Approved

## Opening Top Cover



**Step 1: Remove 6 screws from the top.**

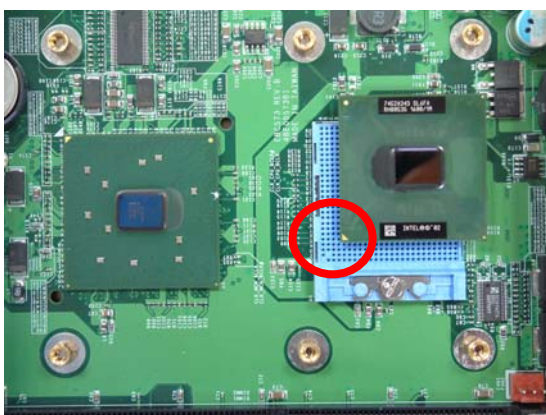
## Installing/Removing CPU



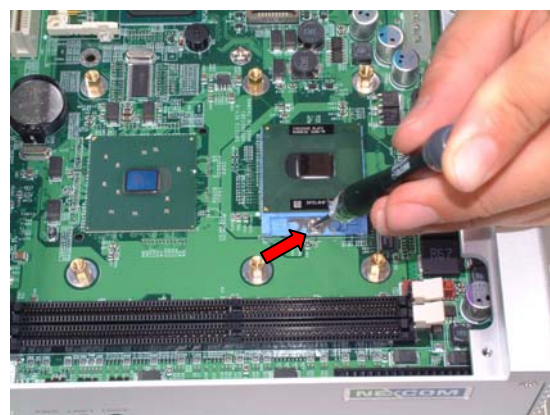
**Step 2: Unscrew 6 screws on heat sink**



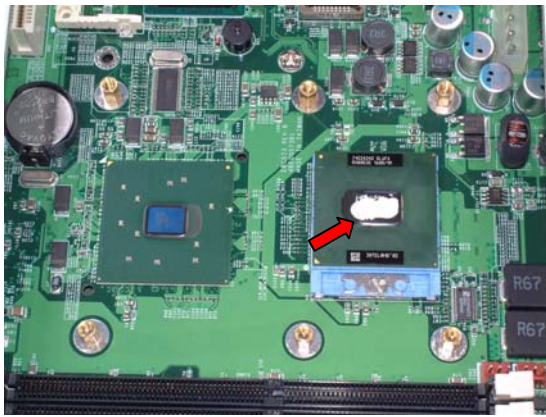
**Step 2.1: Pay attentions to CPU installation**



**Step 2.2: Be aware that the beveled corner of the CPU as shown in the picture is aligned to the direction of the socket.**



**Step 2.3: Secure the CPU**



**Step 2.4: Insert heat sink silicon compound**



**Step 2.5: Lock the heat sink with screw**

**Installing/Removing RAM Card**



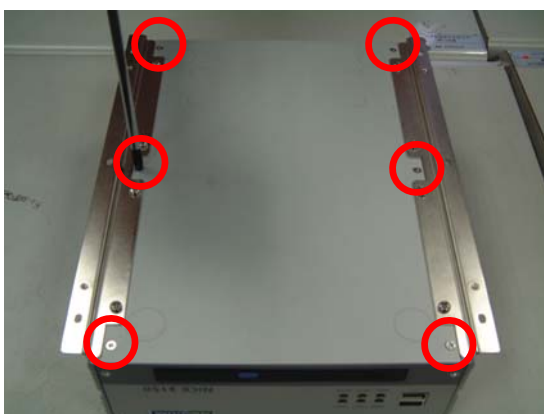
**Step 3: Insert either 1 or 2 DDR**

**Closing Top Cover**



**Step 4: Secure the top cover with screws**

**Open Bottom Cover**



**Step 5: Remove the screws on the bottom side**

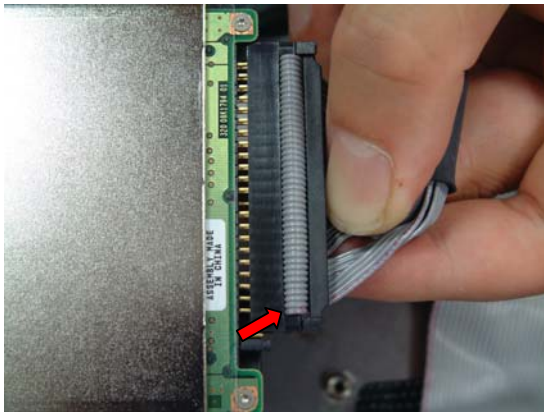
## Installing HDD



**Step 6: Unscrew HDD stand**

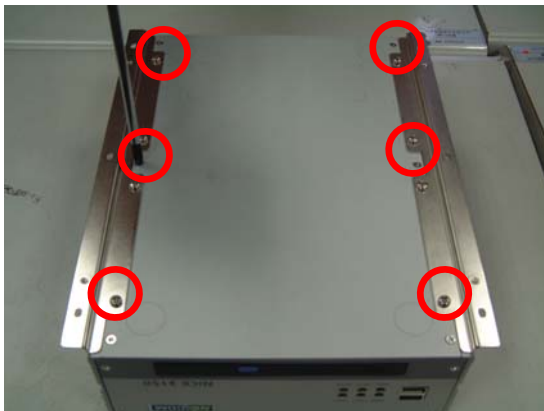


**Step 6.1: Secure 2.5" HDD**



**Step 6.2: Place finished stand with HDD back to the chassis and make sure it is properly secured. Plug HDD cable and pay attention to pin1 of cable (pin1 is indicated in red).**

## Closing Bottom Cover



**Step7: Lock bottom cover with screws**